

Diagram illustrating the layout of a circular road section, showing the placement of D4-SAS 'HAZARD BOARD' bollards. The diagram includes a circular road with a radius of R9.00, a straight section of 15.17, and a transition curve with a radius of R15.00. A vertical line indicates the 'EXTENT OF STAGE' and a horizontal line indicates the 'MATCH TO NEW ROAD LEVEL'. The road is labeled 'ROAD AS DESIGNED'.

END OF STAGE TEMPORARY TURN AROUND DETAIL

NEW CENTRELINE 'MCH0' REFER TO
SHEET 09 FOR LONGITUDINAL SECTION
AND SHEET 12 FOR CROSS SECTIONS

B RETURN TO BE
K&T AND EXTEND
PAST TP'S WHERE
SIBLE. TRANSITION
B TYPES OVER 2m

NEW CENTRELINE 'MCGO' REFER TO SHEET 09 FOR LONGITUDINAL SECTION AND SHEET 12 FOR CROSS SECTIONS

THIS DRAWING IS TO BE VIEWED IN COLOUR AS SOME
FEATURES / SYMBOLS ARE DIFFERENTIATED BY COLOUR.
DRAWING NOT TO BE RELIED ON IF PRINTED IN GREYSCALE.

PROPOSED STAGE BOUNDARY

NEW ROAD PAVEMENT
(REFER SHEET 21 FOR DETAILS)

NEW BLOCK PAVED THRESHOLD
(REFER SHEET 21 FOR DETAILS)

NEW 15m wide FOOTPATH
(REFER SHEET 21 & C.O.P. DETAIL
SD205 & SD210 FOR DETAILS)

150 HIGH BARRIER KERB & GUTTER
(REFER SHEET 22 FOR DETAILS)

150 BK&T

150 HIGH BARRIER KERB & TRAY
(REFER SHEET 22 FOR DETAILS)

100 HIGH SEMI-MOUNTABLE KERB & GUTTER
(REFER SHEET 22 FOR DETAILS)

100 SMK&G

100 HIGH SEMI-MOUNTABLE KERB & TRAY
(REFER SHEET 22 FOR DETAILS)

100 SMK&T

600 SD

600 WIDE SPOON DRAIN
(REFER SHEET 22 FOR DETAILS)

CEB

190 WIDE CONCEALED EDGE BEAM
(REFER SHEET 22 FOR DETAILS)

CONCRETE KERB RAMP
(REFER C.O.P. DETAIL SD125 & SD130)

PROPOSED STORMWATER DRAIN
(REFER SHEETS 13 TO 17)

PROPOSED SIDE ENTRY PIT (SEP)
(REFER SHEETS 13 TO 17)

PROPOSED REAR OF ALLOTMENT DRAIN (HD)
(REFER SHEETS 13 TO 17 & C.O.P. DETAIL SD390)

PROPOSED JUNCTION BOX (JB)
OR GRATED INLET PIT (GIP)
(REFER SHEETS 13 TO 17)

PROPOSED STORM WATER KERB
OUTLET (REFER SHEET 22)

ONS

PROPOSED LIGHT POLE
(REFER SAPN DRAWINGS)

DESIGN SURFACE LEVEL
EXISTING SURFACE LEVEL

9.90

10.00

FINISHED SURFACE MINOR
CONTOURS (0.1m INTERVAL)

FINISHED SURFACE MAJOR
CONTOURS (0.5m INTERVAL)

D

DENOTES FUTURE DRIVEWAY
LOCATION (BY OTHERS)

DENOTES ALLOWABLE BOUNDARY
BUILD (BY FUTURE OWNER)

PROPOSED $\phi 90\text{mm}$ IRRIGATION
CONDUIT. REFER TO NOTES

1. PROVIDE IRRIGATION CONDUIT FOR EACH LOT WHERE FOOTPATH IS ADJACENT TO BOUNDARY. 90mm PVC STORMWATER PIPE EXTENDING 300mm EACH SIDE OF FOOTPATH, CAP EACH END. PLACE CONDUIT 1m OFF-SET FROM WATER METER. IF WATER METER IS ADJACENT DRIVEWAY, PLACE CONDUIT 1m OFF-SET FROM DRIVEWAY EDGE (CONFIRM ON SITE)
2. FOR ALL IRRIGATION CONDUITS CROSSING ROADS, PROVIDE 2 x 90mm PVC PIPE, EXTENDING 1m PAST THE BACK OF KERB ON BOTH SIDES, CAP EACH END.
3. PROVIDE 90mm PVC IRRIGATION CONDUITS UNDER FUTURE DRIVEWAY LOCATIONS WHERE SHOWN EXTENDING 300mm EACH SIDE OF FUTURE DRIVEWAY, CAP EACH END.
4. SUB-BASE & KERBING TO CONTINUE 2.0m PAST STAGE BOUNDARY (TYPICAL).
5. PROVIDE 150 HIGH BARRIER KERB AND GUTTER ON ALL KERB RETURNS AT INTERSECTIONS.
6. REFER TO SHEETS 18 TO 20 FOR LINEMARKING LAYOUT. TRAFFIC CONTROL DETAILS AND RETROREFLECTIVE RAISED PAVEMENT MARKERS INSTALLED IN ACCORDANCE WITH AUSTRALIAN STANDARD 'AS 1742 MANUAL OF TRAFFIC CONTROL DEVICES' AS MODIFIED BY DPT'S CODE OF TECHNICAL REQUIREMENTS, AND THE DPT 'PAVEMENT MARKING MANUAL'.
7. REFER TO SHEETS 18 TO 20 FOR STREET SIGN LOCATIONS. FOR SIGN INSTALLATION DETAILS REFER TO DPT'S MASTER SPECIFICATION, PART 9.9 - INSTALLATION OF SIGNS & CITY OF PLAYFORD REQUIREMENTS.
8. KERB RAMP WIDTHS ARE TO MATCH FOOTPATH WIDTHS.

0 2.5 5 10 15
1:250 (A1); 1:500 (A3)

PUBLIC UTILITIES:
THE SERVICES SHOWN ARE DERIVED FROM PLANS OBTAINED FROM THE RELEVANT SERVICE AUTHORITIES. IT IS THE RESPONSIBILITY OF THE CONTRACTOR TO ARRANGE WITH THE RELEVANT SERVICE AUTHORITIES FOR CONFIRMATION OF SERVICES AND THEIR LOCATION BEFORE EXCAVATION WORK COMMENCES.

100mm ON ORIGINAL DRAWING - DO NOT SCALE DRAWING

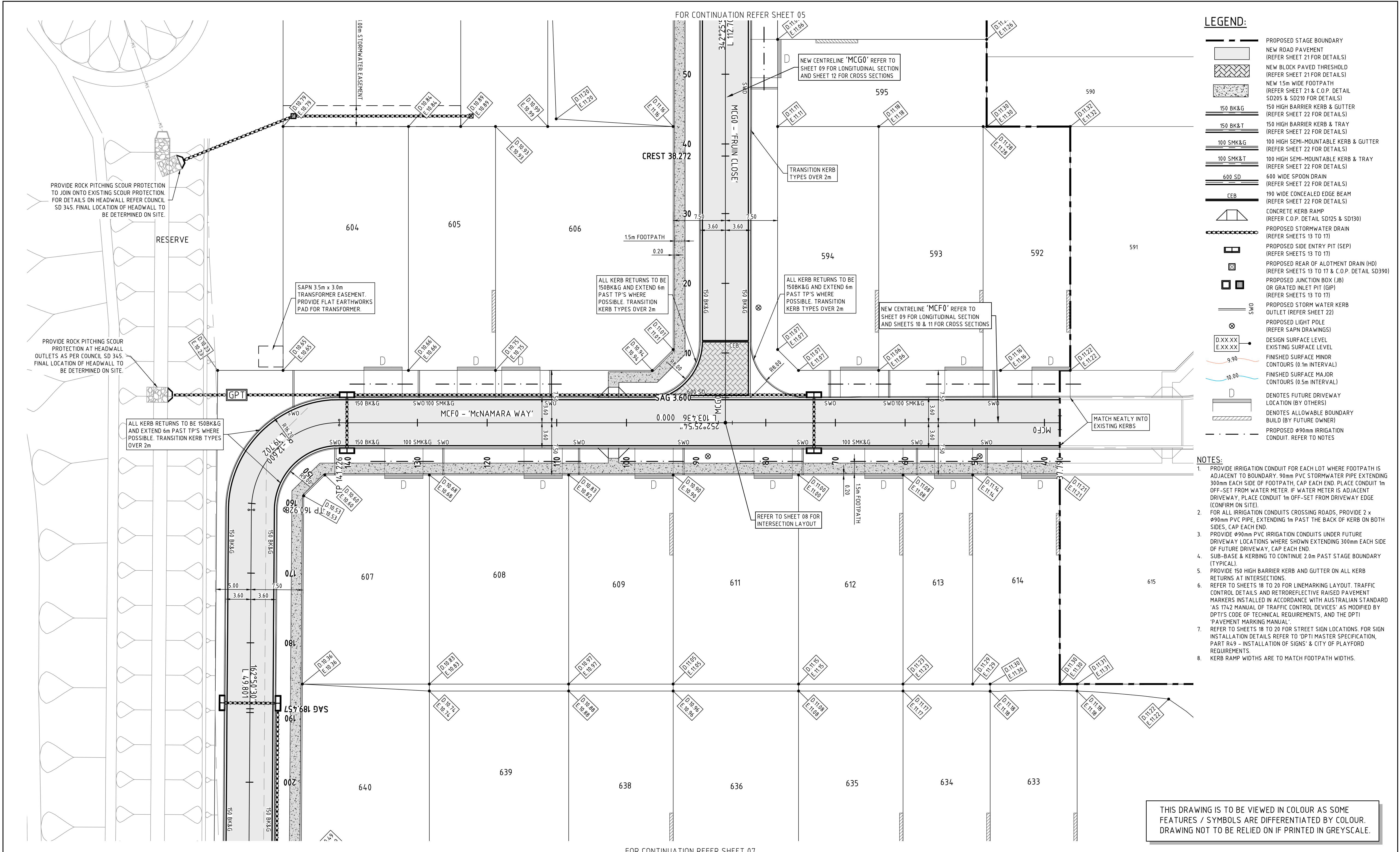
100mm ON ORIGINAL DRAWING - DO NOT SCALE DRAWING



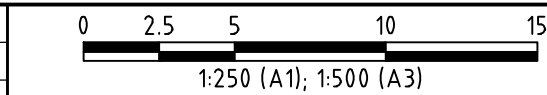
COORDS & DATUM
COORDS TO (MCA04 ZONE)

VIRGINIA GROVE STAGE 7
D/N: 292/D071/14 - SHEEDY ROAD, VIRGINIA
GENERAL CONSTRUCTION PLAN - SHEET 1 OF 3

T:\2018\20180974 VIRGINIA GROVE STAGE 7 AND 8 - LANSER COMMUNITIES PTY LTD\3 DEVELOPMENT\1 ACAD\STAGE 7\20180974 ST7_04_GENERAL_CONSTRUCTION.DWG [GC_01] March 1, 2018 12:10

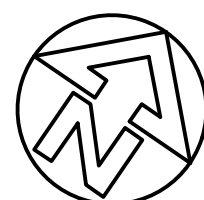


REV	AMENDMENT / REASON FOR ISSUE	DATE	DES.	DWN.	DWGCHK.	VERIFIED	APPROVED
3	REVISED FOR CONSTRUCTION	29.08.19	RIH	RIH	PMD	BEM	AJF
2	REVISED ALLOTMENT LAYOUT	08.08.19	RIH	RIH	AJF	BEM	AJF
1	REVISED ALLOTMENT LAYOUT	12.07.19	RIH	RIH	PMD	AJF	AJF
0	ISSUED FOR CONSTRUCTION	11.06.19	RIH	RIH	AJF	BEM	AJF



PUBLIC UTILITIES:
THE SERVICES SHOWN ARE DERIVED FROM PLANS OBTAINED FROM THE RELEVANT SERVICE AUTHORITIES. IT IS THE RESPONSIBILITY OF THE CONTRACTOR TO ARRANGE WITH THE RELEVANT SERVICE AUTHORITIES FOR CONFIRMATION OF SERVICES AND THEIR LOCATION BEFORE EXCAVATION WORK COMMENCES.

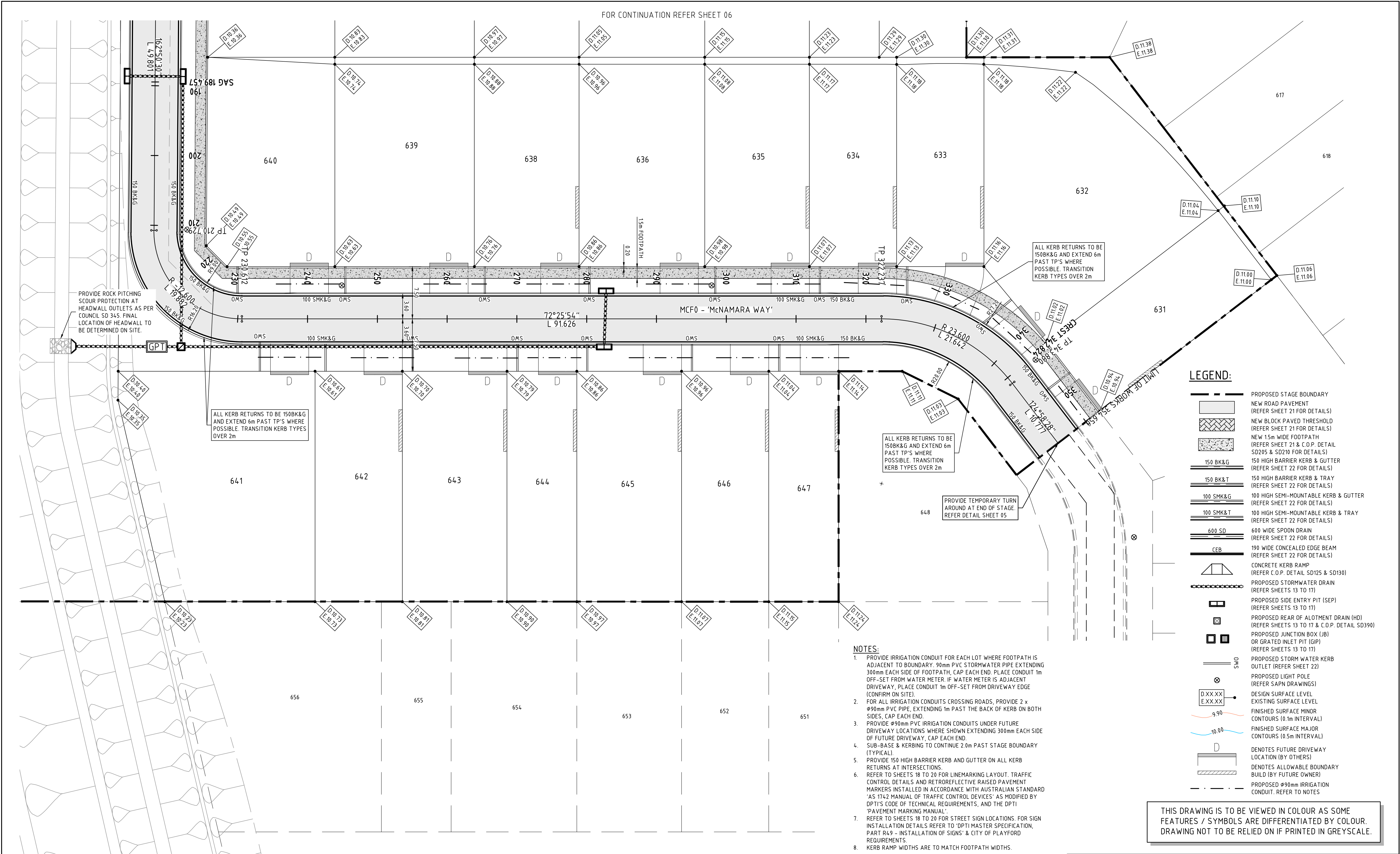
100mm ON ORIGINAL DRAWING - DO NOT SCALE DRAWING



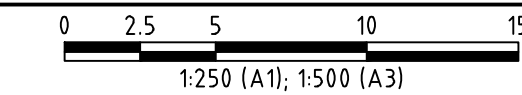
tonkin
tonkin.com.au
Building exceptional outcomes together

SHEET SIZE **A1**
SCALE: 1 : 250 @ A1
ORIGINAL SURVEY BY ALEXANDER SYMONDS
SURVEY DATE: JAN '15
COORDS & DATUM COORDS TO (MGA94 ZONE54) ALL LEVELS TO A.H.D.

ISSUED FOR CONSTRUCTION			
ASTRAD PTY. LTD.			
VIRGINIA GROVE STAGE 7			
D/N: 292/D071/14 - SHEEDY ROAD, VIRGINIA			
GENERAL CONSTRUCTION PLAN - SHEET 2 OF 3			
FILENAME: 20180974_ST17_04_GENERAL_CONSTRUCTION.DWG	JOB NUMBER: 20180974	SHEET NUMBER: 06	REVISION: 3



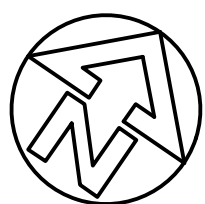
REV	AMENDMENT / REASON FOR ISSUE	DATE	DES.	DWN.	DWGCHK.	VERIFIED	APPROVED
3	REVISED FOR CONSTRUCTION	29.08.19	RIH	RIH	PMD	BEM	AJF
2	REVISED ALLOTMENT LAYOUT	08.08.19	RIH	RIH	AJF	BEM	AJF
1	REVISED ALLOTMENT LAYOUT	12.07.19	RIH	RIH	PMD	AJF	
0	ISSUED FOR CONSTRUCTION	11.06.19	RIH	RIH	AJF	BEM	AJF



PUBLIC UTILITIES:

THE SERVICES SHOWN ARE DERIVED FROM PLANS OBTAINED FROM THE RELEVANT SERVICE AUTHORITIES. IT IS THE RESPONSIBILITY OF THE CONTRACTOR TO ARRANGE WITH THE RELEVANT SERVICE AUTHORITIES FOR CONFIRMATION OF SERVICES AND THEIR LOCATION BEFORE EXCAVATION WORK COMMENCES.

100mm ON ORIGINAL DRAWING - DO NOT SCALE DRAWING



tonkin

tonkin.com.au

Building exceptional outcomes together

SHEET SIZE	A1
SCALE: 1 : 250 @ A1	
ORIGINAL SURVEY BY	ALEXANDER SYMONDS
SURVEY DATE: JAN '15	
COORDS & DATUM	COORDS TO (MGA94 ZONE54) ALL LEVELS TO A.H.D.

ISSUED FOR CONSTRUCTION			
ASTRAD PTY. LTD.			
VIRGINIA GROVE STAGE 7			
D/N: 292/D071/14 - SHEEDY ROAD, VIRGINIA			
GENERAL CONSTRUCTION PLAN - SHEET 3 OF 3			
FILENAME:	JOB NUMBER	SHEET NUMBER	REVISION
20180974_ST17_04_GENERAL_CONSTRUCTION.DWG	20180974	07	3